



BELLEVUE PALACE

B E R N

WELCOME TO AN ICONIC LANDMARK HOTEL IN THE SWISS CAPITAL



ACCOMMODATION ↗

As the official guesthouse of the Swiss government, the Bellevue Palace has been a place of living history for over 150 years. It is the only Grand Hotel in the heart of the Swiss Capital and offers magnificent lounges, superb views of the Bernese Alps and heartfelt hospitality, making of it an exceptional landmark and a unique address. The hotel is an iconic venue for diplomats and politicians and a common meeting hub for the whole of Bern. - 126 rooms, of which 25 are suites incl. 1 presidential suite

LOCATION ↗

The Bellevue Palace is located in the heart of the Unesco awarded old town, right next to the Parliament and a few steps from the shopping arcades and museums. The train station is a 5-minute walk away.

RESTAURANTS, BARS & TERRACES ↗

Brasserie VUE – Contemporary brasserie cuisine, inspired by the French regions

Noumi Grill & Bar – Urban cuisine & a modern worldfood concept with a live DJ

Le Lobby – Enjoy gin & tonic, an afternoon tea or fresh sushi in a historical venue

Bellevue Bar – Switzerland's 1st American bar offers fine selection of signature cocktails

FITNESS ↗

BelleVie Gym: A fitness centre with sauna and a 360° view over the old town

INCENTIVES, MEETINGS, EVENTS ↗

11 banquet and meeting rooms

Capacity up to 400 participants

Cocktail receptions for up to 1000 guests



ROUTE	by car	by train
Zurich Airport	90 min	75 min
Geneva Airport	90 min	2 h
Basel	75 min	75 min
Lucerne	75 min	60 min
Interlaken	45 min	50 min
Neuchâtel	45 min	30 min

GDS Access Codes

Sabre: LW 25098

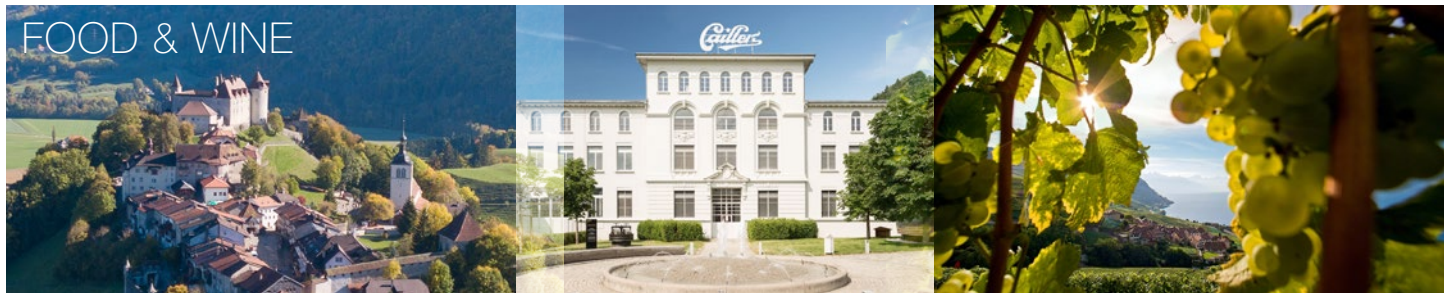
Apollo/Galileo: LW 40966

Amadeus: LW BRN 603

Worldspan: LW 1603

TAKE BERN AS A HUB:

Bern has a fantastic geographical location that allows you to take the city as a hub while you explore nearby regions. Be it lakes or mountains, cheese villages or wine regions, you will find an impressive number of quintessentially Swiss destinations within a radius of 60 minutes' drive.



LA MAISON DU GRUYERE CHEESE DAIRY

The medieval fortress of Gruyères is famous for authentic cheese manufactures. Find out how the traditional dairy products are made every morning and enjoy a wonderful fondue moitié-moitié for lunch. 60 minutes' drive from Bern (66 km / 41 miles).

MAISON CAILLER CHOCOLATE FACTORY

You may try as much chocolate as you can at Maison Cailler, located in the nearby village of Broc. The experience is sensual and poetic and provides the visitor a glimpse of the world of chocolate with all of its delicious aesthetics. 10 minutes' drive from Gruyères (4 km / 3 miles).

TERRACED VINEYARDS OF LAVAUX

The wonderful wine terraces of the Lavaux area are one of Lake Geneva's most beautiful regions and were listed amongst the Swiss Unesco heritage sites. Their little pedestrian trails combine the charming historical villages perched on the wine terraces, such as Chexbres, Rivaz, Saint Saphorin and Cully. The vineyards offer local tastings with great panoramic views over the lake and the Alpine skyline. 30 minutes' drive from Broc (42 km / 26 miles). 60 minutes' drive from Chexbres back to Bern (92 km / 57 miles).

WHAT TO DO IN AND AROUND BERN

SIGHTS

Bern's well-preserved old town is a Unesco World Heritage Site and a stunning example of medieval town planning in Europe.

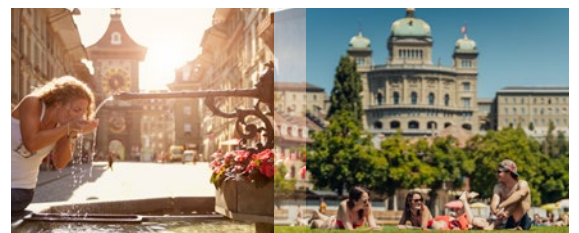
- **Zytlogge:** The city's clock tower has an artistic astronomical calendar clock created in 1530 and is one of the most important sights in Bern.
- **Parliament Building:** This city landmark was built in 1902 and is located next to the Swiss National Bank and the so-called Federal Square.
- **Bern Cathedral:** An impressive late-Gothic building with impressive views from its tower
- **Einstein House:** The building at Kramgasse 49 was the scientist's home between 1903 and 1905. Documents and background material provide information about his work, including the famous «Theory of Relativity».
- **The River Aare:** A beautiful recreation area in the middle of the city, be it for jogging, strolling or urban swimming in summer.

MUSEUMS

- **Paul Klee Centre:** The world's largest collection about Paul Klee, who was originally from Bern.
- **Bern Art Museum:** This well-known museum is home to outstanding works from eight centuries.
- **Museum of Communication:** The only museum in Switzerland which is exclusively dedicated to communication.
- **Bern Historic Museum:** It preserves one of Switzerland's most important art collections.

NEARBY

- **Emmental:** A charming region with rolling hills, protected chalets and the typically Swiss farmhouses and dairies.
- **Neuchâtel:** Discover the Swiss watch-making heritage hub in Le Locle and La Chaux-de-Fonds (Unesco heritage) and enjoy a walk through the beautiful city of Neuchâtel during a day trip.



WALK IN THE FOOTSTEPS OF A GENIUS

Walk through Bern's Unesco-awarded old town and stop by the street Kramgasse 49. This narrow building was Albert Einstein's residence in the early 19th century, it's here where the Swiss citizen wrote the era's most important theory of relativity: $E=mc^2$ – the foundation of modern physics. His apartment is now open to the public and you will discover how Bern inspired his mind.

MEET AND TALK WITH LOCALS

Explore the market in front of the parliament buildings, where farmers sell their fresh produce twice a week. Stroll around the lively square and meet locals who will tell you fascinating stories about the city, which was founded back in 1191. Did you know that the Grosser Muristalden in Bern was added to The New York Times' prestigious list of favorite European city streets?

LAKES & MOUNTAINS

MONTREUX RIVIERA

Enjoy a breath-taking view of Montreux and Vevey on the shore of Lake Geneva, with its accurate palm trees and colourful flower promenades. Visit the island castle Château de Chillon in Veytaux or Charly Chaplin's former residence in Corsier. 60 minutes' drive from Bern (88 km / 55 miles).

GSTAAD AND ZERMATT

Combine a ski vacation with the Swiss capital and choose Bern for an extended pre- or post-ski weekend. Gstaad (90 minutes away by car) is the holiday home to celebrities and royal visitors from around the world, while Zermatt (2 hours by train) is famous for the Matterhorn and its 400 km of slopes. Experience two of the most luxurious ski destinations in Europe.

RESERVATIONS

Reservations Office (open 7 days a week) +41 (0)31 320 45 45
info@bellevue-palace.ch · www.michelreybier.com



SWISS DELUXE HOTELS



@ Destination Gstaad



Rethinking luxury



PARIS



GENÈVE



LONDON



ZURICH



DAVOS



INTERLAKEN

ALPENGOLD HOTEL DAVOS · BELLEVUE PALACE BERN · CRANS AMBASSADOR CRANS-MONTANA

HOTEL MONTE ROSA ZERMATT · LA CHARTREUSE DE COS D'ESTOURNEL SAINT-ESTÈPHE

LA MAISON D'ESTOURNEL SAINT-ESTÈPHE · LA RÉSERVE À LA PLAGE RAMATUELLE

LA RÉSERVE EDEN AU LAC ZURICH · LA RÉSERVE GENÈVE HOTEL, SPA AND VILLA

LA RÉSERVE PARIS APARTMENTS · LA RÉSERVE PARIS HOTEL AND SPA

LA RÉSERVE RAMATUELLE HOTEL, SPA AND VILLAS · L'OSCAR LONDON

MONT CERVIN PALACE ZERMATT · SCHWEIZERHOF ZERMATT

VICTORIA-JUNGFRAU GRAND HOTEL & SPA INTERLAKEN

CLINIQUE NESSENS · COSMÉCEUTIQUES NESSENS · SPA NESSENS



CRANS-MONTANA



BERN



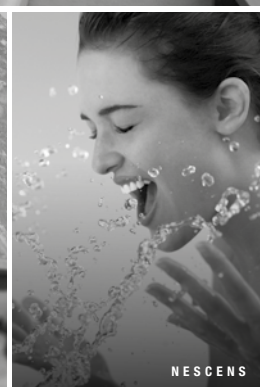
BORDEAUX



RAMATUELLE



ZERMATT



NESSENS



PAMPELONNE

About Michel Reybier Hospitality

For more than 20 years, Michel Reybier has been blazing the trail for a singular, highly contemporary vision of luxury and hospitality. Each of the Michel Reybier Hospitality destinations upholds his cherished values of excellence, authenticity and simplicity.

Whether in a hotel, a villa or a private apartment, in the mountains or by the sea, in the countryside, in the heart of the vineyards or in the city... A sole requirement: namely exceptional places that throb with a distinctive emotion. A sole ambition: to share a refined art of living, dedicated above all else to our guests' well-being and pleasure. This holistic approach is based on unforgettable experiences, where sport, food, wellness and passion form an inseparable whole. This approach is supported by the medical expertise of Nescens, whose ultimate goal is to ensure people live better, healthier lives for as long as possible. The promise of instilling meaning into each and every moment.

www.michelreybierhospitality.com

ALPENGOLD
HOTEL
DAVOS

BELLEVUE PALACE
BERN

CRANS AMBASSADOR
CRANS-MONTANA

MR
HOTEL MONTE ROSA
ZERMATT

LA CHARTREUSE
DE COS D'ESTOURNEL

LA MAISON
D'ESTOURNEL
SAINT-ESTÈPHE

la réserve
À LA PLAGE

la réserve
EDEN AU LAC
ZURICH

la réserve
HOTEL, SPA AND VILLA
GENÈVE

la réserve
HOTEL, SPA AND APARTMENTS
PARIS

la réserve
HOTEL, SPA AND VILLAS
RAMATUELLE

l'oscar
LONDON

MONT CERVIN PALACE
ZERMATT

SCHWEIZERHOF
ZERMATT

VICTORIA-JUNGFRAU
GRAND HOTEL & SPA
INTERLAKEN

nescens
savies antiaging science
| SPA

PRESS CONTACT

Sabina Hanselmann-Diethelm, Director of Communications & Public Relations Michel Reybier Hospitality, shanselmann@michelreybier.com
MR HOSPITALITY GESTION SA · Chemin des Chalets 9 · 1279 Chavannes de Bogis · Switzerland · www.michelreybier.com